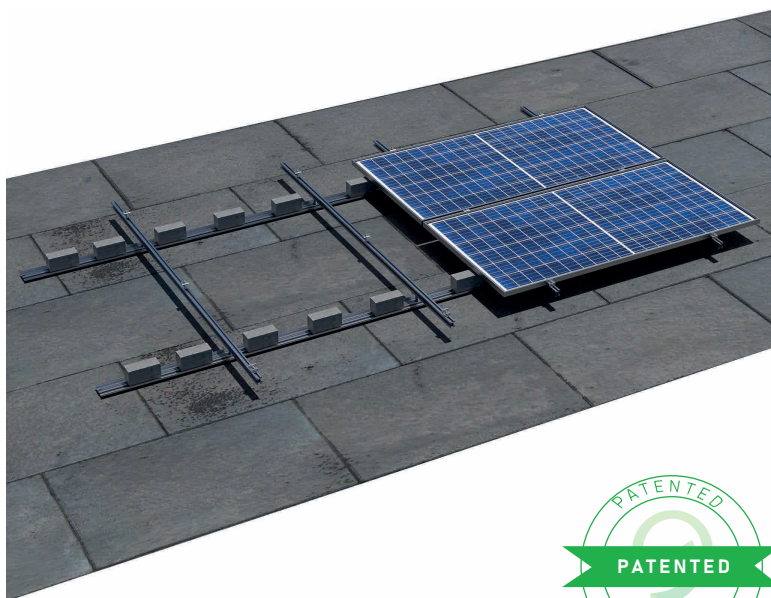


Coplanar Roof Solutions

SCA

AI SS MS



CHARACTERISTICS

Coplanar structural system compatible with self-covering bearing materials of rigid consistency (spongy surfaces, the weight of the system can cause elastic deformation of the same, causing concave areas) and fixation by means of three concrete or similar. To limit surface contact metallic surface of the structure and the cover, is arranged in the bottom face of the structural system, single-sided adhesive EPDM (optional: double-sided) to increase friction between surfaces and minimize the vibrations that the structural system can transmit to the deck and vice versa.

Magnelis Steel Accessories (according to UNE-EN 10088-1: 2015)

Aluminum Profiles EN AW 6005 T6 (according to Eurocode 9)

AISI 304 Stainless Steel Screws (according to UNE-EN 10088-1: 2015)

Easy assembly

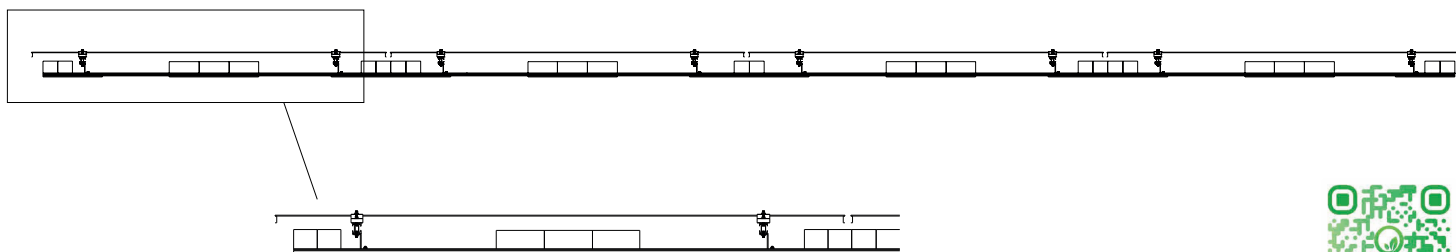
Optimization of necessary counterweights

Screwed joints

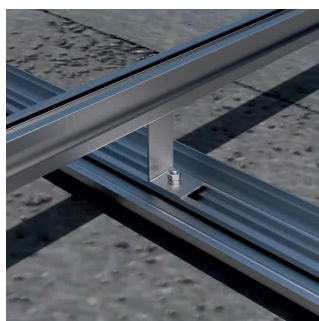
Supply for large plants

Fixing designed to facilitate the evacuation of water and to the reduction of waste in the anchorage area

Minimum 10 year warranty

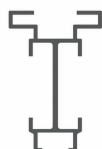


Assembly Video



Compatible with:

Profile R-1014



Profile R-1000



Profile R-1013-B



REFERENCE

DESCRIPTION

CHARACTERISTICS

SCA

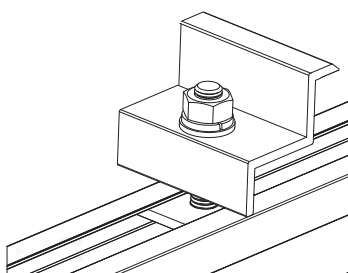
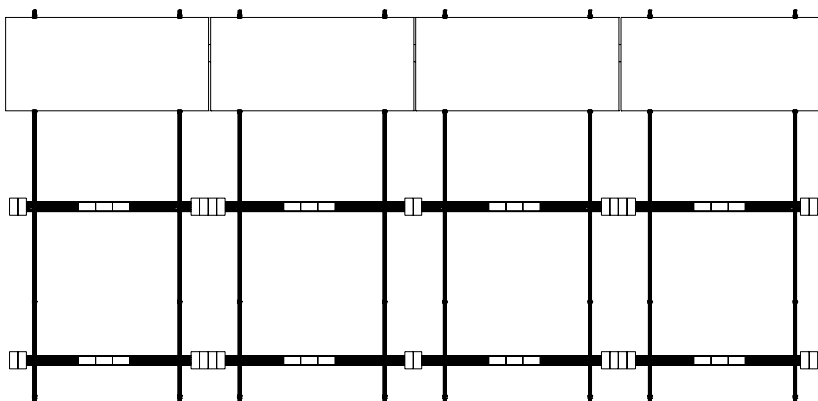
Ballasted Structure for Self-Supporting Roofs

Free height to support surface 125mm
Profile R-1013
Modular System

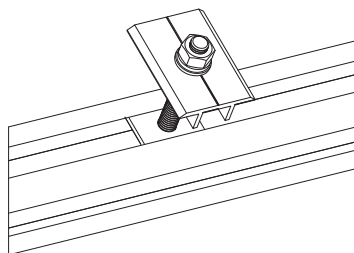


Coplanar Roof Solutions

SCA



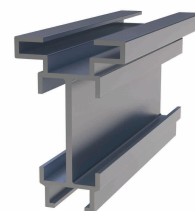
Module final fixing system



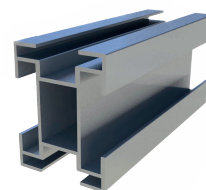
Intermediate fixation system of modules

Compatible with:

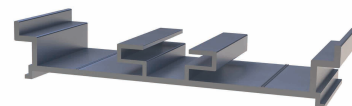
PROFILE R-1014



PROFILE R-1000



PROFILE R-1013-B



STANDARD CODES	STANDARD TITLES
EN 1990	Eurocode: Basis of structural design
EN 1991-1-4	Eurocode 1: Actions on structures. Part 1-4: General actions- Wind actions
EN 1991-1-3*	Eurocode 1: Actions on structures. Part 1-3: Snow loads
EN 1991-1-6	Eurocode 1: Actions on structures. Part 1-6: Actions during execution
EN 1993-1-3	Eurocode 3: Design of steel structures. General rules. Supplementary rules for cold-formed members and sheeting
EN 1993-1-5	Eurocode 3: Design of steel structures. Plated structural elements
EN 1993-1-8	Eurocode 3: Design of steel structures. Design of joints
EN 1993-1-9	Eurocode 3: Design of steel structures. Fatigue
EN 1993-1-10	Eurocode 3: Design of steel structures. Material toughness and through-thickness properties
EN 1993-5	Eurocode 3: Design of steel structures. Piling
EN 1997-1	Eurocode 7: Geotechnical design. General rule
EN 1997-2	Eurocode 7: Geotechnical design. Ground investigation and testing
EN 1998-1	Eurocode 8: Design of structures for earthquake resistance. General rules, seismic actions and rules for buildings
EN_1999-1-1	Eurocode 9: Design of aluminum structures-Part 1-1: General structural rules
EN ISO 14713-1	Zinc coatings- Guidelines and recommendations for the protection against corrosion of iron and steel in structures- Part 1: General principles of design and corrosion resistance
UL 2703	Standard for Mounting Systems, Mounting Devices, Clamping/Retention Devices, and Ground Lugs for Use with Flat-Plate Photovoltaic Modules and Panels
UL 3703	Standard for Solar Trackers
IEC 62727	Photovoltaic systems- Specification for solar trackers
IEC 62817	Photovoltaic systems- Design qualification of solar trackers
ISO 13849	Safety of machinery- Safety related parts of control systems



✉ mfrenovables@mfrenovables.com

☎ 924 290 111

🌐 www.mfrenovables.com

📍 C/ Pedregales, nº16 | 06400 - Don Benito (Badajoz)

