

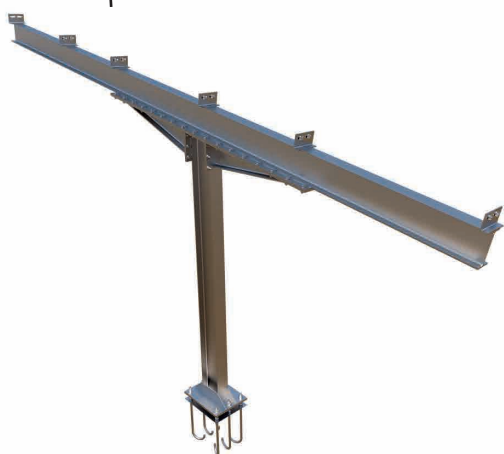
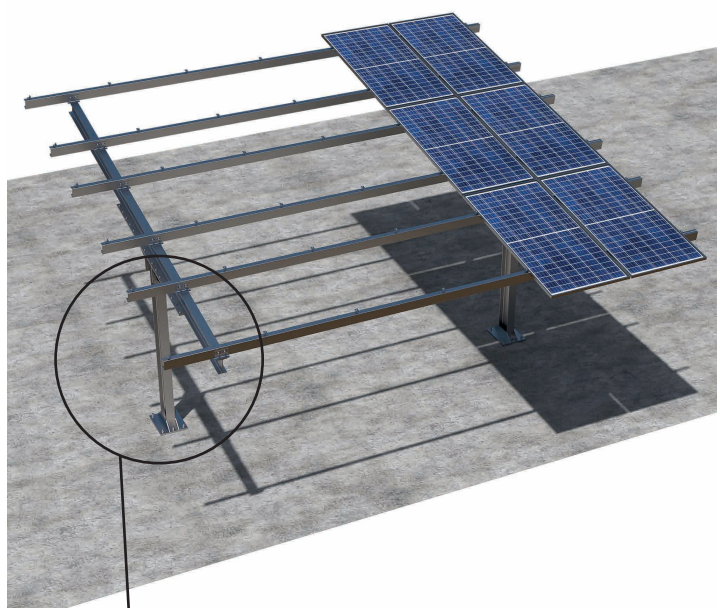


Assembly Video

Parking Structures

Simple Parking

AI SS MS



Portico system with steel profiles with central axis
with an arrangement of 3 vertical photovoltaic modules

CHARACTERISTICS

- Arrangement 3 vertical rows
- Mechanically welded system with screwed joints
- Modular system for any PV module size
- Any composition of number of PV modules
- Galvanized Steel and Magnelis Steel Profiles (according to UNE-EN 10088-1:2015)
- AISI 304 Stainless Steel Screws (according to UNE-EN 10088-1:2015)
- Structure calculated according to structural regulations
- Easy assembly
- Assembly instructions included
- Supply for large plants
- Minimum warranty 10 years



REFERENCE

Simple Parking

DESCRIPTION

Simple Parking Structure

CHARACTERISTICS

Arrangement of 3 photovoltaic modules vertically
5° or 10° inclination

✉ mfrenovables@mfrenovables.com

☎ 924 290 111

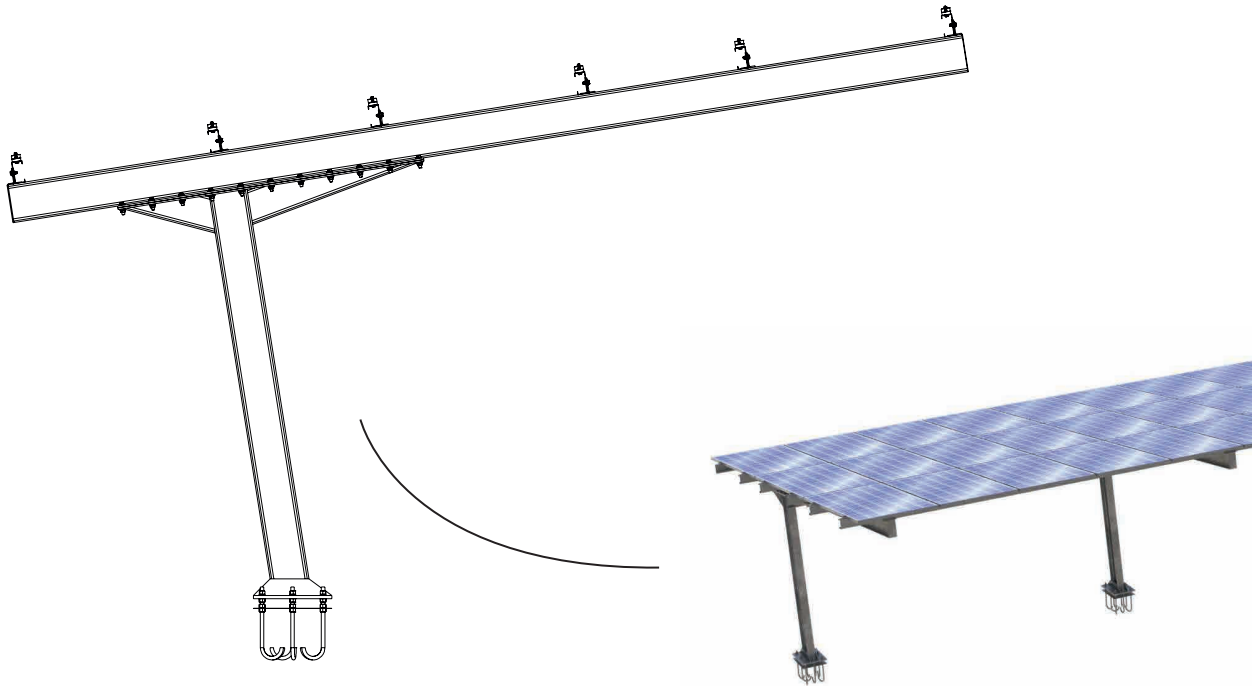
🌐 www.mfrenovables.com

📍 C/ Pedregales, n°16 | 06400 - Don Benito (Badajoz)



Parking Structures

Simple Parking



STANDARD CODES	STANDARD TITLES
EN 1990	Eurocode: Basis of structural design
EN 1991-1-4	Eurocode 1: Actions on structures. Part 1-4: General actions- Wind actions
EN 1991-1-3	Eurocode 1: Actions on structures. Part 1-3: Snow loads
EN 1991-1-6	Eurocode 1: Actions on structures. Part 1-6: Actions during execution
EN 1993-1-3	Eurocode 3: Design of steel structures. General rules. Supplementary rules for cold-formed members and sheeting
EN 1993-1-5	Eurocode 3: Design of steel structures. Plated structural elements
EN 1993-1-8	Eurocode 3: Design of steel structures. Design of joints
EN 1993-1-9	Eurocode 3: Design of steel structures. Fatigue
EN 1993-1-10	Eurocode 3: Design of steel structures. Material toughness and through-thickness properties
EN 1993-5	Eurocode 3: Design of steel structures. Piling
EN 1997-1	Eurocode 7: Geotechnical design. General rule
EN 1997-2	Eurocode 7: Geotechnical design. Ground investigation and testing
EN 1998-1	Eurocode 8: Design of structures for earthquake resistance. General rules, seismic actions and rules for buildings
EN_1999-1-1	Eurocode 9: Design of aluminum structures-Part 1-1: General structural rules
EN ISO 14713-1	Zinc coatings- Guidelines and recommendations for the protection against corrosion of iron and steel in structures- Part 1: General principles of design and corrosion resistance
UL 2703	Standard for Mounting Systems, Mounting Devices, Clamping/Retention Devices, and Ground Lugs for Use with Flat-Plate Photovoltaic Modules and Panels
UL 3703	Standard for Solar Trackers
IEC 62727	Photovoltaic systems- Specification for solar trackers
IEC 62817	Photovoltaic systems- Design qualification of solar trackers
ISO 13849	Safety of machinery- Safety related parts of control systems



CE n° 2375/CPR/21/1014

✉ mfrenovables@mfrenovables.com

☎ 924 290 111

🌐 www.mfrenovables.com

📍 C/ Pedregales, n°16 | 06400 - Don Benito (Badajoz)

